

TEST REPORT

1. Applicant

Name : VISION X ASIA CO.,LTD
Address : 175-4, Chungchun-Dong, Bupyeong-ku, Incheon-Shi, Korea

2. Products

Name : LED LIGHT
Model/Type : MIL-RXP1210
Manufacturer : VISION X ASIA CO.,LTD

3. Test Standard/Method : Test specification is submitted by applicant.

4. Test Results : Refer to the contents(2 page).

5. Use of Report : * * *

6. Date of Application : 2013. 04. 05.

7. Date of Issue : 2013. 04. 29.

Tested by



Choi Yong Hoon
Environmental Test Center

Approved by



Jung Min-Ho
Environmental Test Center

The test results contained apply only to the test sample(s) supplied by the applicant, and this test report shall not be reproduced in full or in part without approval of Korea Testing Laboratory in advance.

Korea Testing Laboratory

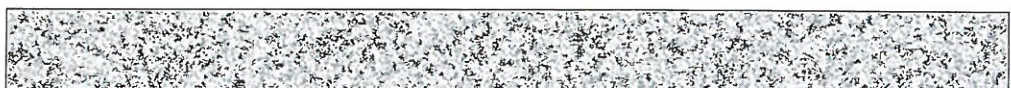


● The summary of test results

Tests	Test Specifications	Result
Low temperature test(Operation)	1 Test specifications <ul style="list-style-type: none"> • Test temperature : -60 ± 2 °C • Test duration : 24 hours • State during the test : Rated voltage applied (DC 32 V) 2 Acceptance criterion <ul style="list-style-type: none"> • After the test the LEDs of the specimen shall be turned on. 	Pass

● Contents

1. General description	-----	3 Page
2. Specimen	-----	3 Page
3. Test specification	-----	4 Page
4. Test result	-----	5 Page
5. Test photo	-----	6 Page
6. Test equipment	-----	7 Page



* 위 마크는 추후 전자확인증 대조 프로그램에서 원본대조시 사용되는 2D코드입니다.

1 General description

The test was performed in accordance with a requirement of the applicant and the test specifications submitted by the applicant.

2 Specimen

2.1 Specification

Product	Model	Rated input voltage	Test item	Sample size
LED LIGHT	MIL-RXP1210	DC 32 V	Low temperature test(0peration)	1 EA

2.2 Figure



Figure 1 - LED LIGHT

3 Test Specification

3.1 Standard Atmospherical Conditions

3.1.1 Standard atmospherical conditions for tests and measurements

Unless otherwise specified, the tests shall be performed at below conditions.

- (1) Temperature : 15 °C ~ 35 °C
- (2) Relative humidity : 25 %R.H. ~ 85 %R.H.
- (3) Air pressure : 86 kPa ~ 106 kPa

3.1.2 Recovery

Unless otherwise specified, recovery shall be kept during (1 ~ 2) hours under standard atmospherical condition of the sub-clause 3.1.1.

3.2 Low temperature test(Operation)

3.2.1 Method

Test items	Test conditions
Test temperature	-60±2 °C
Test duration	24 hours
State during the test	Rated voltage applied (DC 32 V)

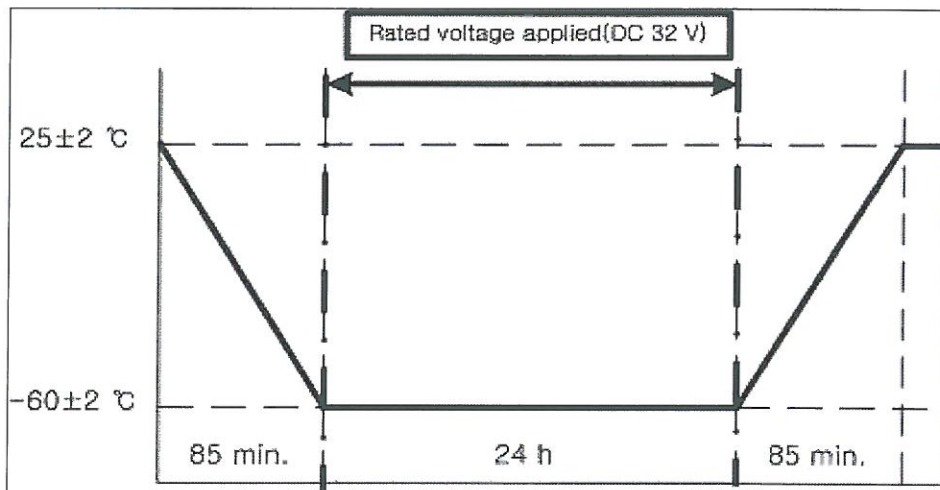


Figure 2 - Test condition

3.2.2 Acceptance criterion

- After the test the LEDs of the specimen shall be turned on.

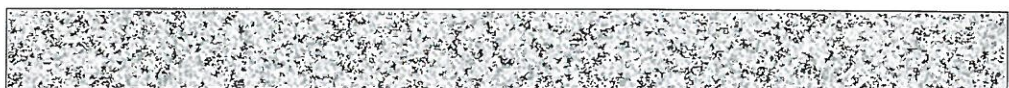
4 Test result

The tests were performed in accordance with **Clause 3** and test results are as follow.

Test item	Acceptance criterion	Test result
Low temperature test(Operation)	<ul style="list-style-type: none"> After the test the LEDs of the specimen shall be turned on. 	PASS



Figure 3 - After the test LED LIGHT



※ 위 마크는 추후 전자확인증 대조 프로그램에서 원본대조시 사용되는 2D코드입니다.

5 Test photo



Figure 4 - Low temperature test

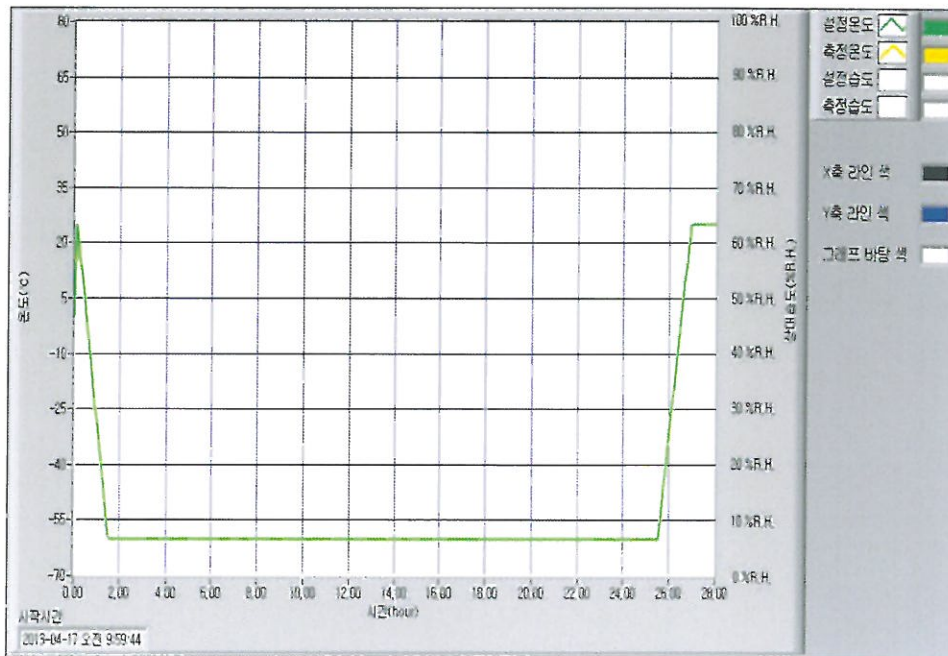
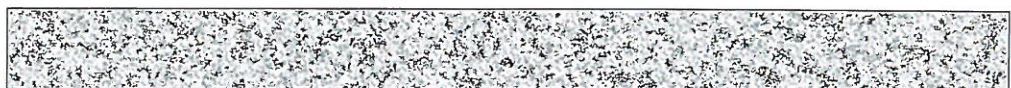


Figure 5 - Low temperature Test graph

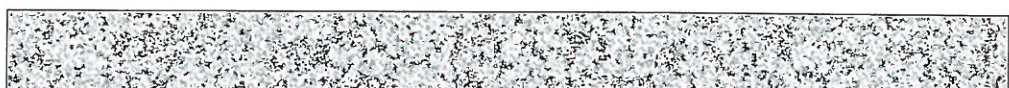


※ 위 마크는 추후 전자확인증 대조 프로그램에서 원본대조시 사용되는 2D코드입니다.

6 Test Equipment

List of test equipment

Equipment	Manufacturer	Model
Chamber	ESPEC	PSL-2KTH
DC Power Supply	Agilent	6633B



※ 위 마크는 추후 전자확인증 대조 프로그램에서 원본대조시 사용되는 2D코드입니다.